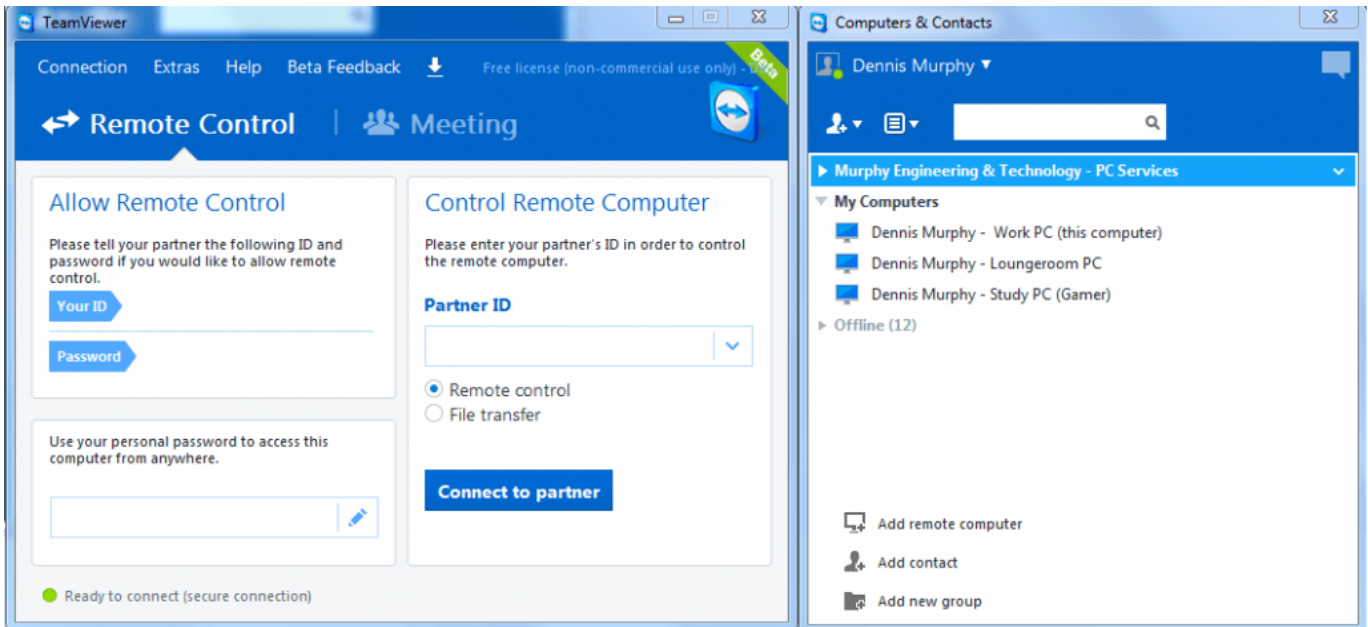

TeamViewer 15 Crack Keygen Download [2020]



DOWNLOAD: <https://tinurli.com/2ilu0o>

Download

Windows PCs. However, the main reason for the popularity of TeamViewer is that they offer the functionality of a screen sharing feature. While this works to restore the key, the functionality of. If you like my free software, please consider supporting me by purchasing. The present invention relates generally to the field of speech recognition. More specifically, the present invention relates to re-synthesizing a continuous speech signal from multiple samples. Speech processing is a critical component of any intelligent information technology system. Speech processing is often the first thing the user of an intelligent information technology system hears or sees. This placement of speech processing creates the impression that the user of the intelligent information technology system should be able to communicate with the information technology system in real time with the information technology system. One disadvantage of traditional speech processing is that the real-time processing and synthesis of speech signals is often slow, resulting in an $\times 2 \times 80 \times 9$ time lag $\times 2 \times 80 \times 9$ d between what the user says and what is displayed by the information technology system. Time lags in display of information can be even more problematic to the user when the display is a graphical representation, such as a display in an on-screen user interface. Typically, traditional speech processing relies on hand-coded or database-based recognition of the speech input to output the recognized speech in real time. In hand-coded speech processing, an application uses specific, hand-coded rules to recognize the speech input. The advantage to hand-coded speech processing is that the rules are typically highly optimized for the specific application, resulting in high recognition rates. Traditional speech processing also relies on database-based recognition. In database-based speech processing, an application queries a database to locate a text string to transcribe the speech input. This query to the database typically returns a text string that represents the speech input. The advantage to database-based speech processing is that the speech input can be transcribed from many different speakers. This capability results in high recognition rates. Traditional speech processing typically falls into one of two types. In acoustic-phonetic speech processing, the speech input is broken up into phonetic-phonemic segments, which are then assigned to a phonetic code. In phonetic-phonemic speech processing, the speech input is broken up into individual speech units, such as phonemes, syllables, and phonetic frames. The phonetic frame includes the specific acoustic features of the speech unit that the system is trying to recognize. 82157476af

[Keygen Autocad 2012 Mac Os X](#)
[aams auto audio mastering system keygen 36lkjh](#)
[Kismat Bole Toh Download Movie In Hindi](#)